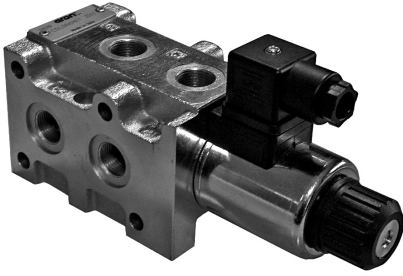


# CDL066... STACKABLE CIRCUIT SELECTOR VALVES



The stackable circuit selector valves, type CDL.06.6, allows one single drive of 6 users with 5 elements connected in series.

As they are moved from high performances solenoids they don't need the external drainage.

This valves can manage high hydraulic powers with a minimal pressure drop.

Max. pressure	250 bar
Max. flow	50 l/min
Overlap	negative
Hydraulic fluids	Mineral oils DIN 51524
Fluid viscosity	10 ÷ 500 mm <sup>2</sup> /s
Fluid temperature	-25°C ÷ 75°C
Ambient temperature	-25°C ÷ 60°C
Max. contamination level	class 10 in accordance NAS with 1638 with filter β <sub>25</sub> ≥ 75
Weight	see "Overall dimension"

<b>CDL.06.6...</b>	
"40W" DC COILS	CH. I PAGE 74
CONNECTORS STANDARD	CH. I PAGE 20

### ORDERING CODE

<b>CDL</b>	Stackable circuit selector valve
<b>06</b>	Size NG06
<b>6</b>	No. of way (single element)
<b>W</b>	Threaded connectors 3/8" BSP
<b>I</b>	Internal drainage
<b>*</b>	No. of elements: 1 / 2 / 3 / 4 / 5
<b>*</b>	Voltage (Tab. 1)
<b>**</b>	Variants (Tab. 2)
<b>1</b>	Serial No.

### TAB.1 - 40W COIL

#### DC VOLTAGE

<b>L</b>	12V
<b>M</b>	24V
<b>W</b>	Without DC coil

Voltage codes are not stamped on the plate, their are readable on the coils.

### TAB.2 - VARIANTS

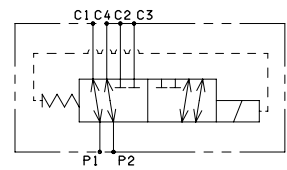
No variant (without connectors)	S1(*)
Viton	SV(*)
Emergency button	ES(*)
Rotary emergency button	P2(*)
Raccordements Deutsch DT04-2P	CZ

Other variants available on request.

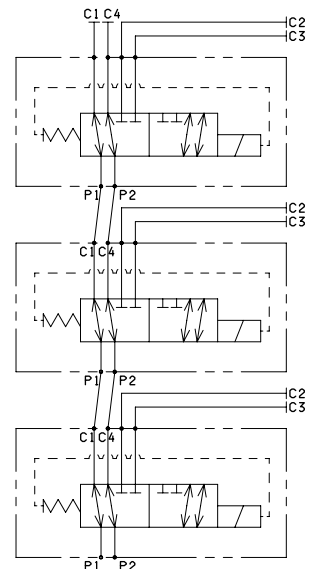
(\*) Coils with Hirschmann connection supplied without connectors. The connectors can be ordered separately, Ch. I page 20.

### HYDRAULIC SYMBOLS

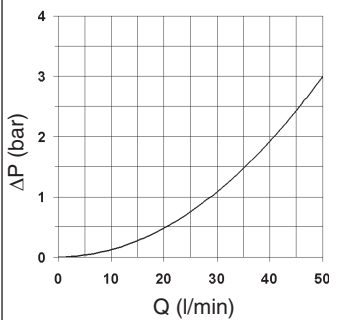
#### SINGLE ELEMENT



#### MULTISTATION CONNECTION



### PRESSURE DROPS

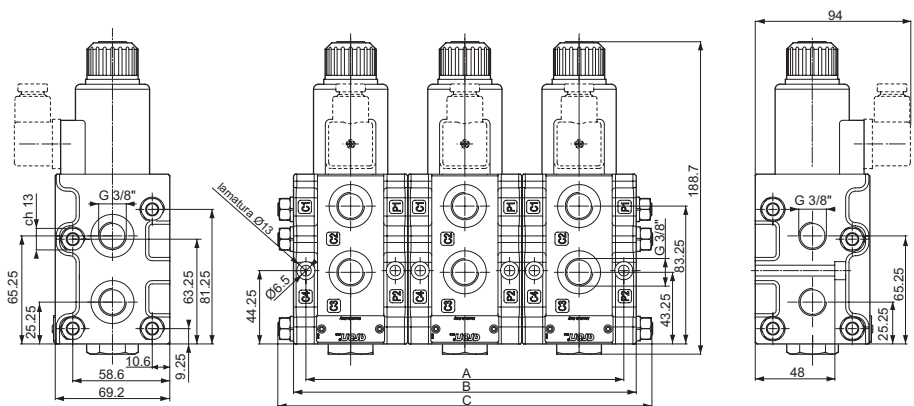


P1 → C1, P1 → C2,  
P2 → C3 et P2 → C4

The fluid used is a mineral oil with a viscosity of 46 mm<sup>2</sup>/s at 40°C; the tests have been carried out at a fluid temperature of 40°C.

Fixing screws UNI 5931 M6x60 with material specifications min. 8.8  
Tightening torque for studs 8 Nm / 0.8 Kgm  
Tightening torque for rods 20 Nm / 2 Kgm

### OVERALL DIMENSIONS



No. of elements	No. of way	Length (mm)			Weight (Kg)	Kit spare part code* (rods and studs)
		A	B	C		
1	06	54	69	-	3	/
2	08	123	138	160	6,3	V89.56.0001
3	10	192	207	226	9,3	V89.56.0002
4	12	261	276	296	12,3	V89.56.0003
5	14	330	345	365	15,3	V89.56.0004

(\*) For multiple composition rods and studs are available.