

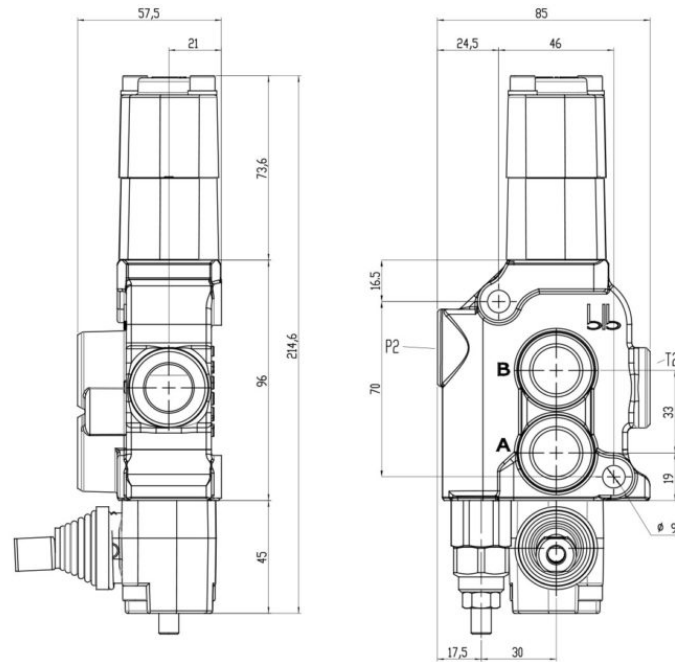
BM45

Single section valve

Flow 45 l/min

Ports threads 1/2" BSP /

SAE 10



SPECIFICHE TECNICHE / TECHNICAL SPECIFICATIONS

PORTATA NOMINALE / NOMINAL FLOW	45 L/min	12 GPM
PORTATA MAX / MAX FLOW	60 L/min	15,9 GPM
PRESSIONE NOMINALE / NOMINAL PRESSURE	250 bar	3600 PSI
PRESSIONE MAX SUGLI UTILIZZI / MAX PRESSURE ON PORTS	320 bar	4700 PSI

FILETTATURE STANDARD / STANDARD THREADS

	A - B	P2	T2
G (BSP)	1/2"	1/2"	1/2"
F (UNF - SAE 10)	7/8"-14	7/8"-14	7/8"-14

SPECIFICHE TECNICHE / TECHNICAL SPECIFICATIONS

CONTROPRESSIONE MAX
ALLO SCARICO / MAX
PRESSURE ON TANK LINE

80 bar

1100
PSI

TRAFILAMENTI INTERNI / INTERNAL OIL LEAKAGE

A - B → T

4 ÷ 8
cc/min

CONDIZIONI DI TEST / TESTING CONDITIONS

PRESSIONE / PRESSURE

100 bar

TEMPERATURA DELL'OLIO / OIL
TEMPERATURE

40 °C

VISCOSITÀ DELL'OLIO / OIL VISCOSITY

32 mm²/s

DIMENSIONI / DIMENSIONS

N. DI SEZIONI
N. OF SECTIONS

L

l

mm

inch

mm

inch

BM45

85

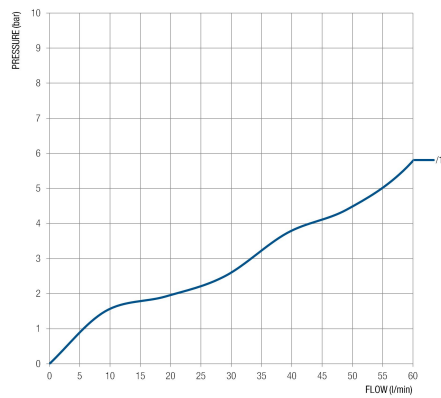
3,35

46

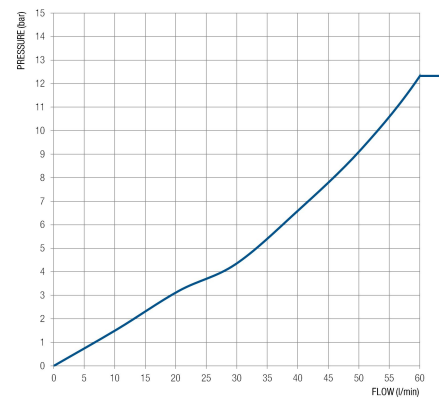
1,81

PERDITE DI CARICO / PRESSURE DROP

P → T



P → A - B



A - B → T

