

# BM180

Single section valve

Flow 170 l/min

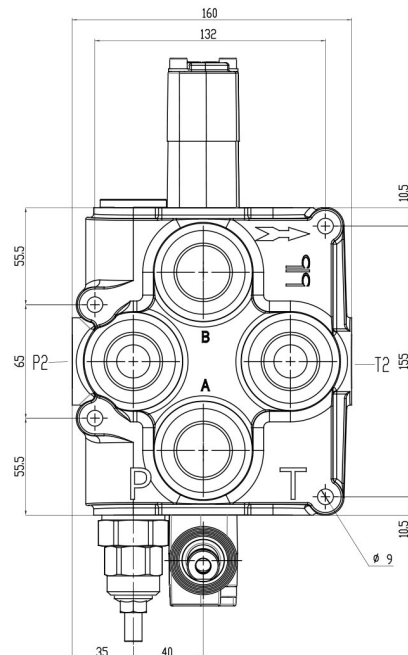
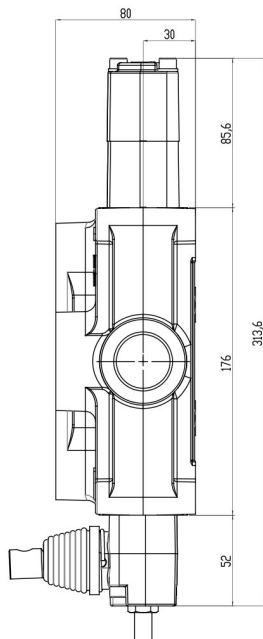
Ports threads 1" BSP / SAE

14

2 Inlet and Outlet ports

Prepared for High pressure

Carry Over (Power Beyond)



## SPECIFICHE TECNICHE / TECHNICAL SPECIFICATIONS

PORTATA NOMINALE / NOMINAL FLOW	170 L/min	45 GPM
PORTATA MAX / MAX FLOW	190 L/min	50 GPM
PRESSIONE NOMINALE / NOMINAL PRESSURE	250 bar	3600 PSI
PRESSIONE MAX SUGLI UTILIZZI / MAX PRESSURE ON PORTS	320 bar	4700 PSI
CONTROPRESSIONE MAX ALLO SCARICO / MAX PRESSURE ON TANK LINE	80 bar	1100 PSI

## FILETTATURE STANDARD / STANDARD THREADS

	A - B	P	T	P2	T2
G (BSP)	1"	1"	1"	1"	1"
F (UNF - SAE 14)	1,5/16"-12	1,5/16"-12	1,5/16"-12	1,5/16"-12	1,

## TRAFILAMENTI INTERNI / INTERNAL OIL LEAKAGE

A - B → T 4 ÷ 8 cc/min

## CONDIZIONI DI TEST / TESTING CONDITIONS

PRESSIONE / PRESSURE 100 bar

TEMPERATURA DELL'OLIO / OIL  
TEMPERATURE 40 °C

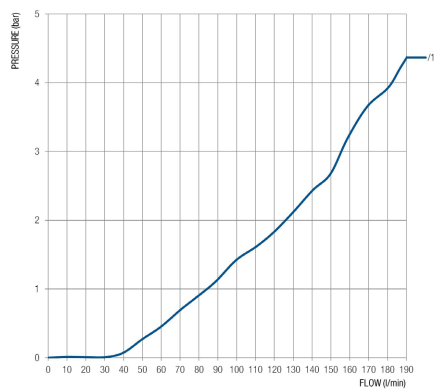
VISCOSITÀ DELL'OLIO / OIL  
VISCOSITY 32 mm<sup>2</sup>/s

## DIMENSIONI / DIMENSIONS

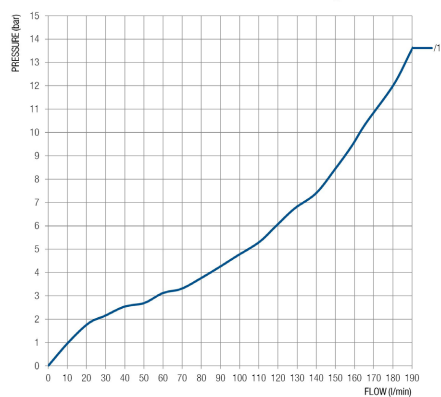
N. DI SEZIONI N. OF SECTIONS	L		I	
	mm	inch	mm	inch
BM180	160	6,30	132	5,20

# PERDITE DI CARICO / PRESSURE DROP

P → T



P → A - B



A - B → T

