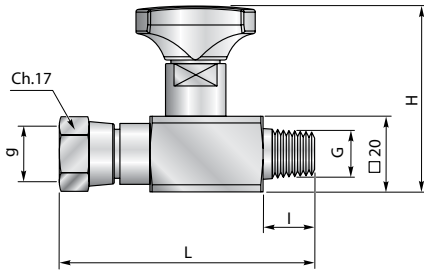


Esclusore attacco diritto girevole

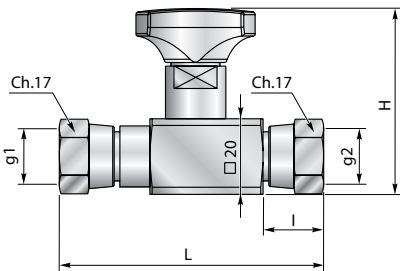
Anti-shock valve swivel straight connection



| G | g | H | L | I | PN [bar] | Codice/Ref. |
|----------------|---------------|----|----|----|----------|-------------|
| ISO 7/1 R 1/4" | ISO 228 G1/4" | 50 | 60 | 14 | 400 | ES 180 |

Esclusore attacco diritto doppia femmina girevole

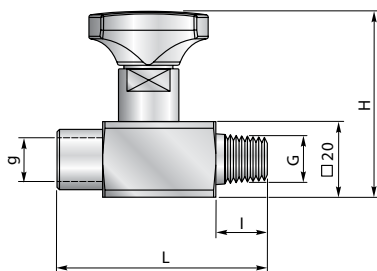
Anti-shock valve double swivel straight connection



| g1 | g2 | H | L | I | PN [bar] | Codice/Ref. |
|---------------|-------------------|----|------|----|----------|-------------|
| ISO 228 G1/4" | ISO 228 G1/4" | 50 | 60 | 14 | 400 | ES 18G |
| ISO 228 G1/4" | ISO 228 G1/4" 60° | 46 | 55.5 | 14 | 400 | ES 18GF |

Esclusore attacco diritto fisso

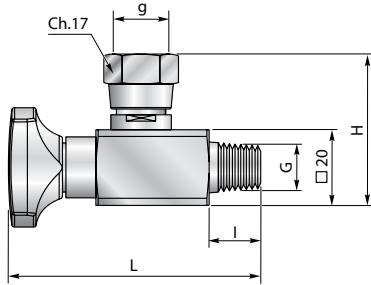
Anti-shock valve fixed straight connection



| G | g | H | L | I | PN [bar] | Codice/Ref. |
|----------------|----------------|----|------|----|----------|-------------|
| ISO 7/1 R 1/4" | ISO 228 G1/4" | 50 | 58 | 14 | 400 | ES 18F |
| ISO 7/1 R 1/4" | ISO 7/1 R 1/4" | 50 | 58.5 | 14 | 400 | ES 18FR |
| 1/4" - 18 NPTF | 1/4" - 18 NPTF | 50 | 60 | 14 | 400 | ES 18FN |
| 7/16" - 20UNF | 1/4" - 18 NPTF | 50 | 60 | 14 | 400 | ES 18FNU |

Esclusore attacco 90°

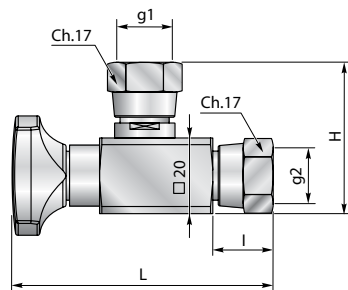
Anti-shock valve 90° connection



| G | g | H | L | I | PN [bar] | Codice/Ref. |
|----------------|---------------|----|----|----|----------|-------------|
| ISO 7/1 R 1/4" | ISO 228 G1/4" | 40 | 68 | 14 | 400 | ES 090 |

Esclusore attacco 90° doppia femmina girevole

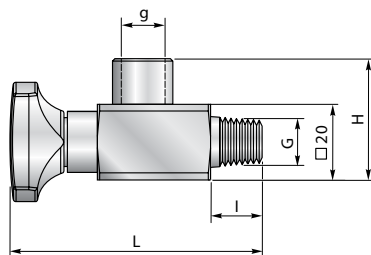
Anti-shock valve 90° double swivel connection



| g1 | g2 | H | L | I | PN [bar] | Codice/Ref. |
|---------------|-------------------|----|----|----|----------|-------------|
| ISO 228 G1/4" | ISO 228 G1/4" | 40 | 68 | 14 | 400 | ES 09G |
| ISO 228 G1/4" | ISO 228 G1/4" 60° | 40 | 68 | 14 | 400 | ES 09GF |

Esclusore attacco fisso 90°

Anti-shock valve fixed 90° connection



| G | g | H | L | I | PN [bar] | Codice/Ref. |
|----------------|---------------|----|----|----|----------|-------------|
| ISO 7/1 R 1/4" | ISO 228 G1/4" | 40 | 68 | 14 | 400 | ES 09F |